

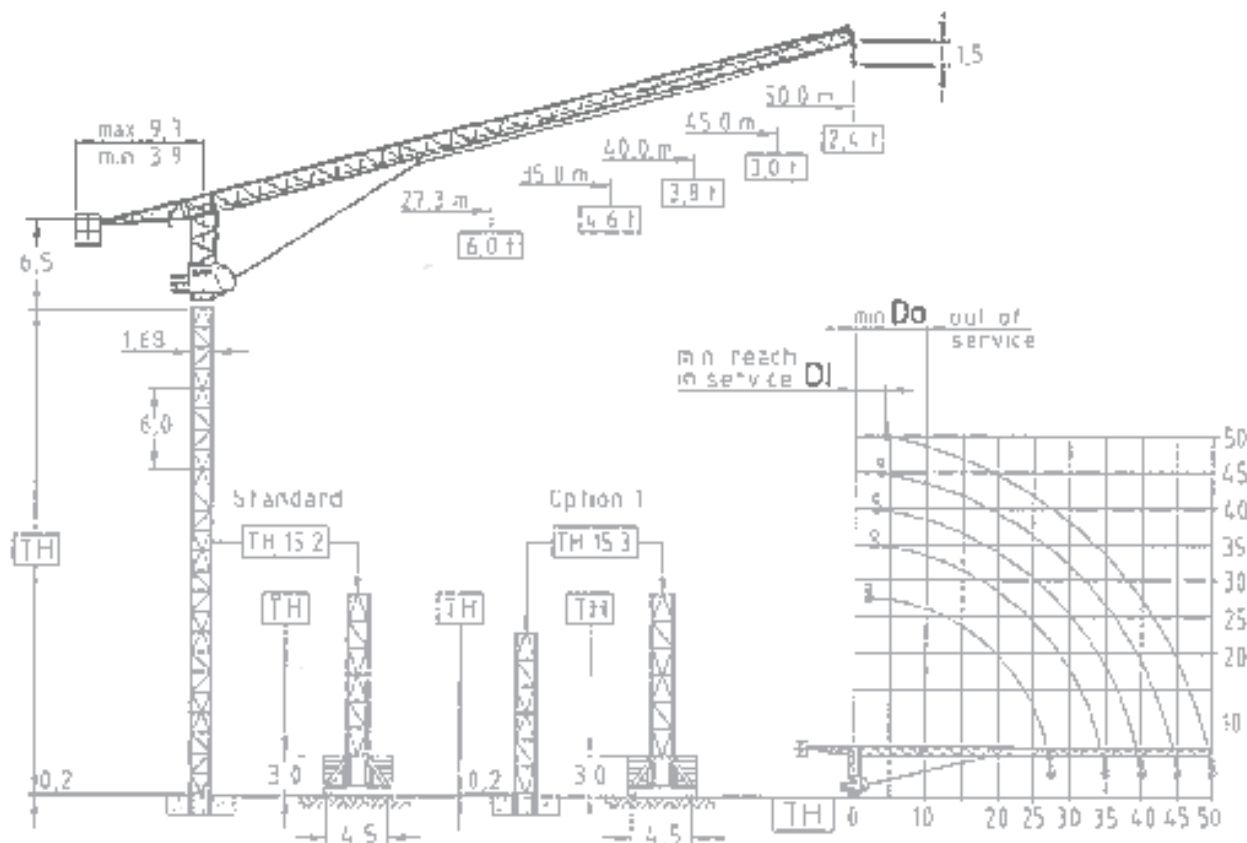
TCUK

TOWER CRANES UK LIMITED

- Topless luffing crane **JTL 158.6** -



 **JOST**



Tower heights all data in (m)

Jib (m)	Jib reach (m)		Standard Tower		Option 1	
	Di	Do	Foundat.	Chassis	Foundat.	Chassis
			TH 15.2	UC 4.5-15.2	TH 15.3	UC 4.5-15.3
27.3	2.2	12.0	39.0	39.0	51.0	39.0
35.0	2.8	12.0	36.0	33.0	48.0	33.0
40.0	3.2	12.0	33.0	30.0	45.0	30.0
45.0	3.6	10.0	30.0	27.0	42.0	27.0
50.0	4.1	10.0	27.0	24.0	39.0	24.0

EN 14439 : 2008
WIND C 25
ISO 9001 : 2008

Transport

	Truck	Cont
Top crane	5	6
Tower 2 units	1	1
Climbing	1	1
Chassis	1	1

Radius & Capacity

Jib (m)	rope	max. Load (t)	Jib reach (m)							
			22	25	27.3	30	35	40	45	50
50.0	3.0	40.9	3.00	3.00	3.00	3.00	3.00	3.00	2.70	2.40
	6.0	21.5	5.68	5.12	4.53	4.21	3.57	3.08	2.70	2.40
45.0	3.0	45.0	3.00	3.00	3.00	3.00	3.00	3.00	3.00	
	6.0	23.7	6.00	5.66	5.12	4.66	3.95	3.47	3.00	
40.0	3.0	40.0	3.00	3.00	3.00	3.00	3.00	3.00		
	6.0	26.1	6.00	6.00	5.60	5.17	4.39	3.80		
35.0	3.0	33.0	3.00	3.00	3.00	3.00	3.00			
	6.0	27.3	6.00	6.00	6.00	5.43	4.60			
27.3	3.0	27.3	3.00	3.00						
	6.0	27.3	6.00	6.00						

Hoist 22.0 kW FI

v	t	m/min					
		0.7	1.2	1.8	2.8	3.0	3.0
m/min	1	88	72	58	44	38	22
	1	1.4	2.4	1.6	5.6	6.0	6.0
m/min	1	44	36	29	22	19	11

Drum capacity 550.0 m

Hoist 30.0 kW FI

v	t	m/min					
		0.7	1.0	1.6	2.4	3.0	3.0
m/min	1	24	16	90	68	58	32
	1	1.6	2.0	3.2	4.8	6.0	6.0
m/min	1	62	57	45	24	29	16

Drum capacity 970.0 m

Motor	15.0 kW FI	1 x 4.4 kW	2 x 5.0 kW
r/v	2.00 min	0.77 rpm	25.0 r/min
Power requirement		Hoist 22.0 kW	55 kVA
Upper part		Hoist 30.0 kW	65 kVA

Power requirement

400V (+10%) - 50Hz

Counter weight

Block 1	2 x 5.3 t
Block 2	1 x 7.2 t
Block 3	7 x 1.7 t
Total	21.6 t

Ropes

	Ø (mm)	N/mm ²
Hoist	10.0	1960

JOIST Cranes GmbH & Co KG
Bretonischer Ring 18
85630 Grasbrunn
Germany

Fon +49-89-43571322
Cell +49-89-45452563
Mail info@joistcranes.de
Web www.joistcranes.de