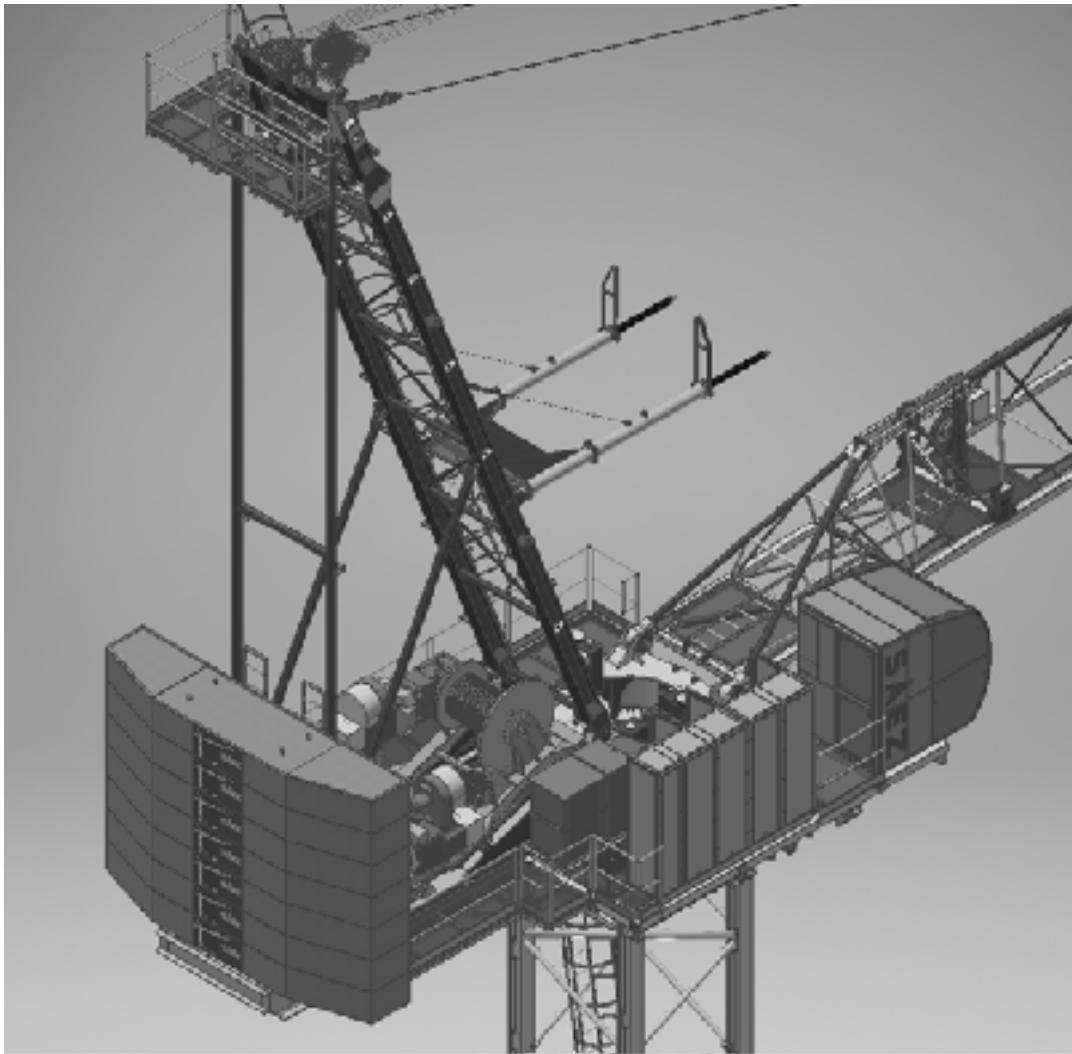


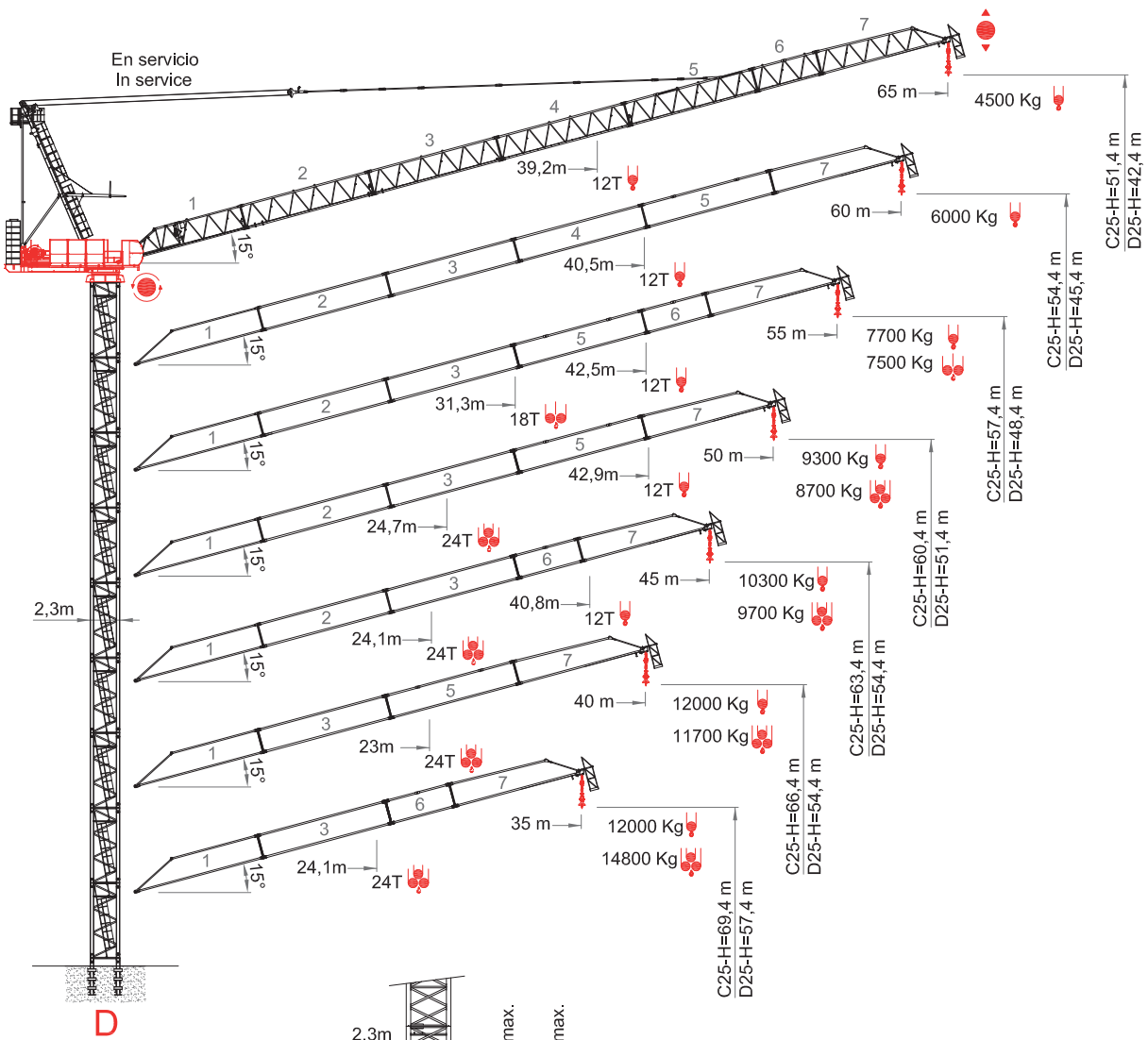
# TCUK

TOWER CRANES UK LIMITED

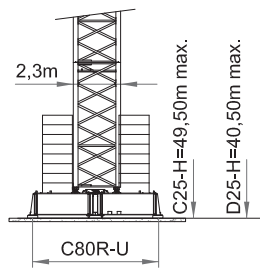
## INSTRUCTIONS AND USER'S MANUAL

# SL 450

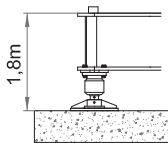




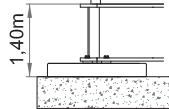
**D**



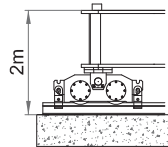
**B**



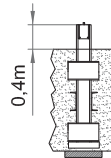
**A(i)**



**B**



**C(i)**



**D**

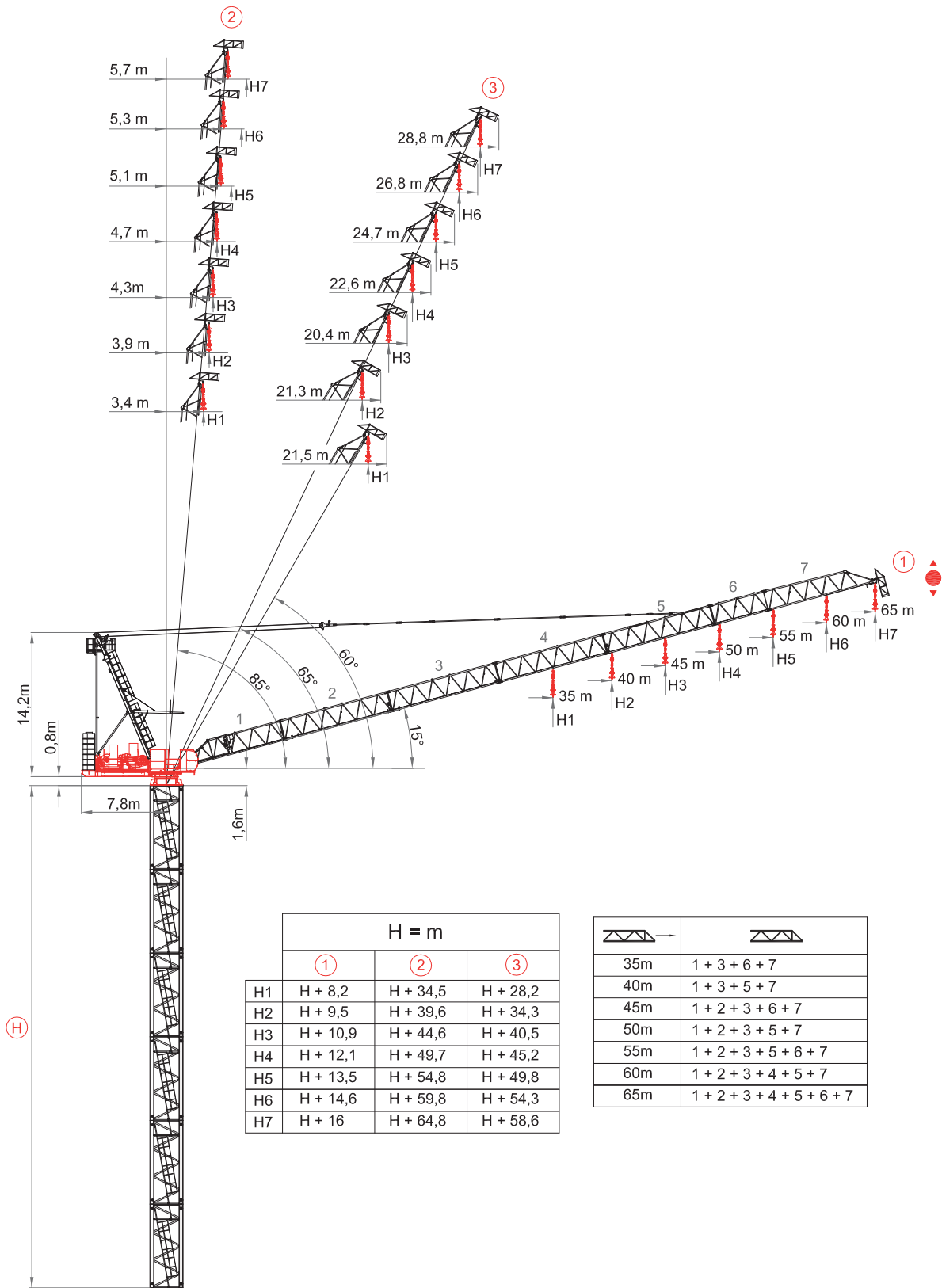
(i) Consultarnos - Consultateci - Consult us - Nous consulter - Auf anfrage - советова́ться




**DIN/FEM** **CE**

EN 14439-FEM 1005- C25/D25







- ① Pluma maxima - Portée maxi - Sbraccio massimo - Maximum jib - Max. Ausleger
- ② Pluma min. en servicio - Portée min. in service - Minimum jib (in service) - Sbraccio min. in servizio - Mindst. Ausleger in Betrieb
- ③ Pluma min. fuera de servicio - Portée min. hors service - Minimum jib (out of service) - Sbraccio min. fuori servizio - Mindst. Ausleger ausser Betrieb
- Ⓜ Altura torre - Hauteur mat - Tower height - Altezza torre - Turmhöhe


**65 m**  



10	15	20	25	30	35	39,2	41,5	45	50	55	60	65	m
12000	12000	12000	12000	12000	12000	12000	11300	9500	8100	6600	5500	4500	Kg





**60 m**  



10	15	20	25	30	31	35	40,5	46	49,6	55	60	m
12000	12000	12000	12000	12000	12000	12000	12000	9900	8800	7100	6000	Kg






**55 m**  



10	15	20	25	30	35	40	42,5	45	50	55	m
12000	12000	12000	12000	12000	12000	12000	12000	11000	9100	7700	Kg
10	15	20	25	30	31,3	35	40	45	50	55	m
18000	18000	18000	18000	18000	18000	15600	12950	10800	8900	7500	Kg




**50 m**  



10	15	20	25	30	35	40	42,9	45	50	m
12000	12000	12000	12000	12000	12000	12000	12000	11000	9300	Kg
10	15	20	23	25	30,4	35	40	45	50	m
18000	18000	18000	18000	18000	18000	15500	13000	10800	9100	Kg
10	15	20	24,7	25	30	35	40	45	50	m
24000	24000	24000	24000	23200	18900	15100	12600	10400	8700	Kg




**45 m**  



10	15	20	25	30	32	35	40,8	45	m
12000	12000	12000	12000	12000	12000	12000	12000	10300	Kg
10	15	20	22	29,1	30	35	40	45	m
18000	18000	18000	18000	18000	17950	14900	11900	10100	Kg
10	15	20	24,1	25	30	35	40	45	m
24000	24000	24000	24000	23000	17500	14500	11500	9700	Kg

**40 m**  


10	15	20	25	30	32	35	40	m
12000	12000	12000	12000	12000	12000	12000	12000	Kg
10	15	20	25	27	30	35,5	40	m
18000	18000	18000	18000	18000	18000	14600	12100	Kg
10	15	20	23	25	30	35,5	40	m
24000	24000	24000	24000	22250	17800	14200	11700	Kg

**35 m**  


10	15	18	25	30	33	35	m
12000	12000	12000	12000	12000	12000	12000	Kg
10	15	20	23	25	32,5	35	m
18000	18000	18000	18000	18000	18000	15200	Kg
10	15	20	24,1	25	30	35	m
24000	24000	24000	24000	23100	18300	14800	Kg

